



The SMS Group's **Time Collection for Plex Solution**

Contactless Palm and Facial Recognition System



Organizations with large hourly workforces know that keeping track of time and attendance is critical.

Traditional time-clocks pose a host of productivity issues including long queues, buddy punching, and hygiene concerns. Biometric solutions can rely on high priced hardware making scalability a challenge. This is where The SMS Group fits! Our seamless integration of both hardware and software provides a seamless, cost-effective solution that integrates directly with your Plex ERP.



WHAT I LIKE ABOUT THE SMS
SOLUTION IS THAT IT IS
**COST-EFFECTIVE AND VERY
EASY TO SET UP AND MAINTAIN.**

James Williams
Infrastructure Manager, Minth Group



- ✔ **Seamless integration with Plex**—eradicates redundant data entry. Enrolling users is as simple as entering their Plex User ID into the SMS Admin console. All other data is pulled from Plex.
- ✔ **Multiple read methods**—contactless palm, facial recognition, and fingerprint biometric.
- ✔ **Batch storage**—eliminates downtime during routine system updates and unplanned outages. Timestamps are collected and sent directly to Plex via Plex Web Services in real time. If for any reason a connection to Plex does not exist, the punches are stored until the connection can be reestablished and recorded in Plex at the time they were collected.
- ✔ **Grouping feature**—enables you to individually assign groups of users to specific devices close to their designated work-station, ensuring time paid is time worked.
- ✔ **Intuitive user interface**—simplifies the clock-in/out process. An automatic toggle feature alternates from in to out, eliminating added manual interaction on the clocks and reducing line backups.
- ✔ **Easy-to-use central interface**—makes it simple to manage multiple workstations across numerous plants from one location. A central transaction log provides an easily accessible audit trail.
- ✔ **Simple, cost-effective SaaS licensing for solution**—Purchase as many clocks as you like! (One-time activation fee per clock license when installed). 10 users or 10,000 users, one simple cost.
- ✔ **On-board, rechargeable battery backup on each clock**

TECHNICAL SPECS

Communications: USB Host, Ethernet, Wifi

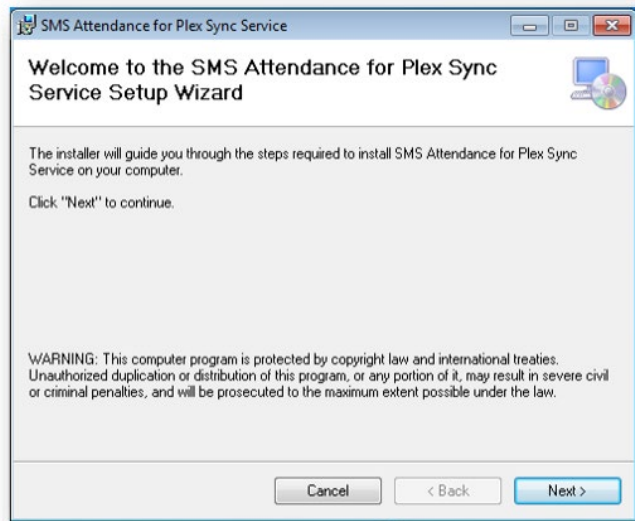
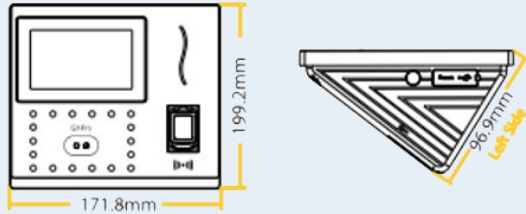
Connection: POE ready, 2,000 mah rechargeable battery

Capacity: Store up to 20,000 fingerprints, 12,000 faces, 6,000 palms, 20,000 cards, and log up to 200,000 transactions

Display: 4.3" color touch screen

Entry Methods: Touchless biometric palm or facial, RFID (64-bit 125kHz), optional HID (26-bit 125 kHz), password

Dimensions (mm):



**Easy set up and configuration
for full control of your time and
attendance through Plex**

For more information: Contact Aaron Billing at 937-498-2700 or abilling@thesmsgroup.com